

*At Lista, we provide more than efficient storage space; we also create productive working environments that:*

- *are secure, built-to-last solutions*
- *offer the greatest possible density, organization and access*
- *are ergonomically designed with the user in mind*
- *are constructed from the highest quality materials*
- *provide a durable, high-quality, attractive powder coat finish*

### ***Building the ideal system: the modular building block approach***

*Lista's modular building block approach makes our workspace systems the most versatile in the industry. With Lista products, you get the exact solutions that your applications demand, and the flexibility to meet future demands.*



### ***Our opening attraction***

*The Lista drawer is the centerpiece of our modular building block system.*

*Lista drawers:*

- *provide complete organization of tools, components or instrumentation, right at the point of use*
- *maximize use of cubic capacity for improved space utilization*
- *are available in the industry's largest variety of sizes and shapes*
- *can be subdivided to create custom compartments*



**Custom Products & Services, Inc.**

PH: 888-444-1202

E-Mail: [info@custom-products.com](mailto:info@custom-products.com)



### **Unmatched customer support**

*Lista has knowledgeable, helpful distributors throughout North America. No matter where on the continent you may be, the guidance, products and product support you need are always close at hand.*



### **Design services**

*Lista's technical support and design team can provide you with a detailed plan for your individual workspace and storage needs, free of charge. We offer solutions designed for efficiency and future flexibility.*

### **Custom applications**

*When you work with Lista, you're certain to get the workspace you need. Together, our engineering and manufacturing departments can analyze your needs, and then modify a standard product to meet your unique application.*



*Lista created a custom toolbox for service technicians at United Auto Group dealerships. The cabinet combination includes a Double Width cabinet mounted over two Standard Width cabinets, and a special "skirt" to hide the mobile base.*

 **Custom Products & Services, Inc.**  
PH: 888-444-1202  
E-Mail: [info@custom-products.com](mailto:info@custom-products.com)

# Lista – A Solid Investment

## Built to last

The result of high-quality, all-steel construction and innovative engineering and design, Lista products are built to provide decades of functionality and ease of use in the most rugged working environments. An investment in a Lista modular workspace system will still be paying dividends years from now with safe, convenient storage and problem-free operation.

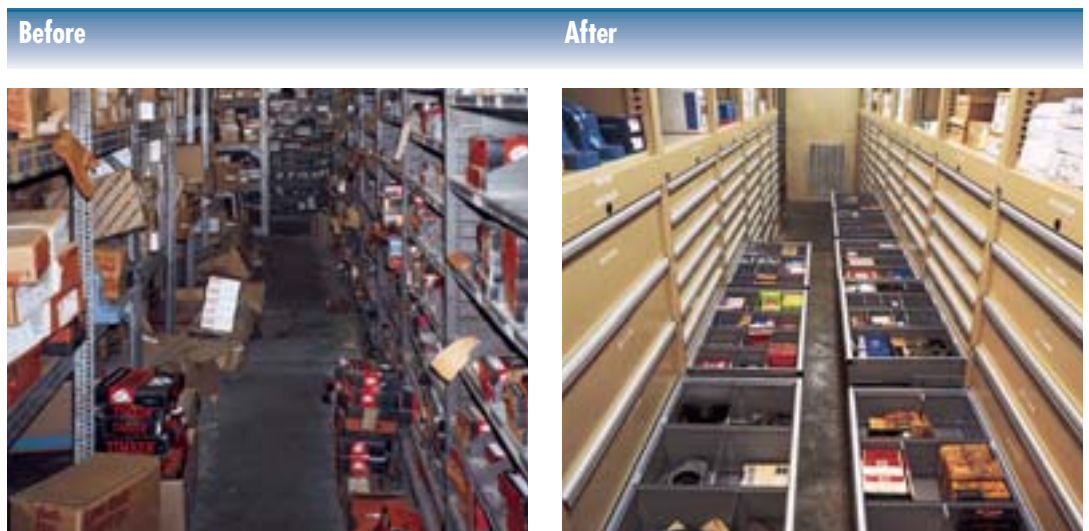


*Thirty-year-old Lista cabinets stand the test of time. Installed at the General Electric Steam Turbine Division, Lista cabinets were still in use three decades later. The cabinets store a variety of heavy machine tooling equipment, such as turbine casing tools, end mills and cutting tools. GE's program manager of computer aided manufacturing says, "Lista cabinets don't wear out, and there's no real maintenance to speak of."*

## The alternative to shelving

When you replace shelving with Lista cabinets, you maximize space, enhance inventory control and protect your tools and parts from dust, dirt and shrinkage. When deciding where to invest your business dollars, consider the savings you get from Lista cabinets in:

- space
- time
- and money



*The installation of Lista cabinets provides for organized storage, maximized density and easy inventory control. This working environment is now clean, professional and aesthetically pleasing.*

# Lista – Sizes and Shapes

By taking advantage of Lista's wide array of cabinet footprints, heights, features and optional

accessories, you can create a customized cabinet that ideally suits your specific storage needs.

## Cabinet Footprints

Lista cabinets maximize your workspace with cabinets in widths and depths to fit almost any footprint.

Lista's **MP Width** cabinets are well-suited for use as laboratory case work, and can also be adapted as mobile cabinets.

Our most popular cabinet, the **Standard Width** fits the needs of a wide range of installations and applications.

When you need to store tools and parts that are 24" in length or longer, or combine short and long items together, our **Mid-Width** and **Double Width** cabinets are the perfect option. They can be integrated with our other full depth cabinets.

Lista's Shallow Depth cabinets (**ST** and **HS Width**) provide the ultimate in space savings and ergonomic design. With their high-density storage and shallow footprint, these cabinets are ideal for replacing shelves and maximizing floor space in narrow aisles.



**MP Width Cabinet**  
page 14  
22 3/16" wide x 28 1/2" deep



**Standard Width Cabinet**  
page 20  
28 1/4" wide x 28 1/2" deep



**Mid-Width Cabinet**  
page 28  
47" wide x 28 1/2" deep



**Double Width Cabinet**  
page 34  
56 1/2" wide x 28 1/2" deep



**ST Width Shallow Cabinet**  
page 42  
28 1/4" wide x 22 1/2" deep



**HS Width Shallow Cabinet**  
page 48  
40 1/4" wide x 22 1/2" deep



## Cabinet Heights

Lista cabinets maximize your workspace with housings in heights to meet any storage need. Not all heights are available for all cabinet sizes — see charts on the pages for your preferred cabinet footprint, shown above.

