

iLoupe XL

w/more advanced features

iSeries



Custom Products & Services, Inc. 
 6140 Claude Way E.,
 Inver Grove Hts., MN. 55076
 PH: 888-444-1202 FAX: 651-452-2264
 E-Mail: info@custom-products.com
 Website: www.custom-products.com

Hand-held portable microscope provides optical magnification of 3x-25x, 86x digitally on screen and 3x-300x digitally on a PC.

5 Mega pixels high resolution sensor for detailed images.

2 inch LCD display for easy viewing, capturing and recording of magnified images.

180 degree rotated lens tube allows user to capture magnified images at any angle.

Includes a SD Card for storing images and editing on a PC.

Record Movies in AVI format (Movie length based on storage capacity).

Easy to use Touchpad controls.

The built-in 6 White-light LEDs and adjustable illumination ensures the magnified images are clear and bright.

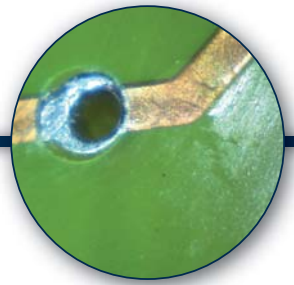
Rechargeable lithium-ion battery, the microscope can be used continuously for more than 5 hours.

TV Video Out allows you to see images on TV.

A professional-quality hand-held digital microscope portable enough for you to easily use out on the factory floor, on your customers' sites, at crime scenes, out in the field, and more. Easily document changes and problems, gather evidence, and take care of your customers.

We designed our iLoupe XL Digital Microscope system to take professional-quality digital images - for engineers, doctors, scientists, and technical photography specialists.

With built-in adjustable illumination, a very wide magnification range 3x to 300x digitally on a PC and a built in 5 Mega-Pixel Camera, the iLoupe XL is one tool that you can have when and where you need it for a wide variety of situations.



Visit www.aveninc.com to see more images taken with the iLoupe.

Applications

QC Inspection

Research

Medical

Forensics

Archaeology

Forestry

Printing & Textile Inspection
and Much More

Specifications

Effective pixels:	5.1M Pixels
Image Sensor:	1/2.5" CMOS
Image resolution:	3264 x 2448 (8M) 2560 x 1920 (5M) 2048 x 1536 (3M) 1600 x 1200 (2M) 1280x 960 (1.3M) 640 x 480 (VGA)
LCD display:	2.0" LCD
Magnification/ Optical Zoom:	Optical 3x-25x and 86x digitally on screen. 3x-300x Digitally on PC
Shutter speed:	3 seconds
Delay capture:	5, 10 seconds
File format:	Still image: JPEG Movie: AVI
Movie resolution:	20fps @ 640 x 480 30 fps @ 320 x 240
Movie length:	Based on Storage capacity
Video output:	PAL / NTSC
Storage media:	External : SD card up to 2GB Internal: 256MB
Power source:	Li-Battery (3.7V / 1700mA)
Charge source:	USB port / Adapter
Power consumption:	Standby 230mA Capture 345mA Record 300mA
Charge current:	USB port 300mA, Adapter 500mA
Charge time:	4 hours (using adapter)
Operating time:	Standby: 7 hours Operating: 5 hours
Dimensions:	156.8(W) x 64.8(H) x 39.1(D) (mm)
Weight:	180g (without battery and SD card)

Minimum System Requirements

O/S	Windows XP and VISTA
Processor	Pentium 4
RAM	128 MB
USB port	One USB 1.1 port or above
Graphics	VGA system with at least 16 bit color support

Order # Description

26700-520 iLoupe XL