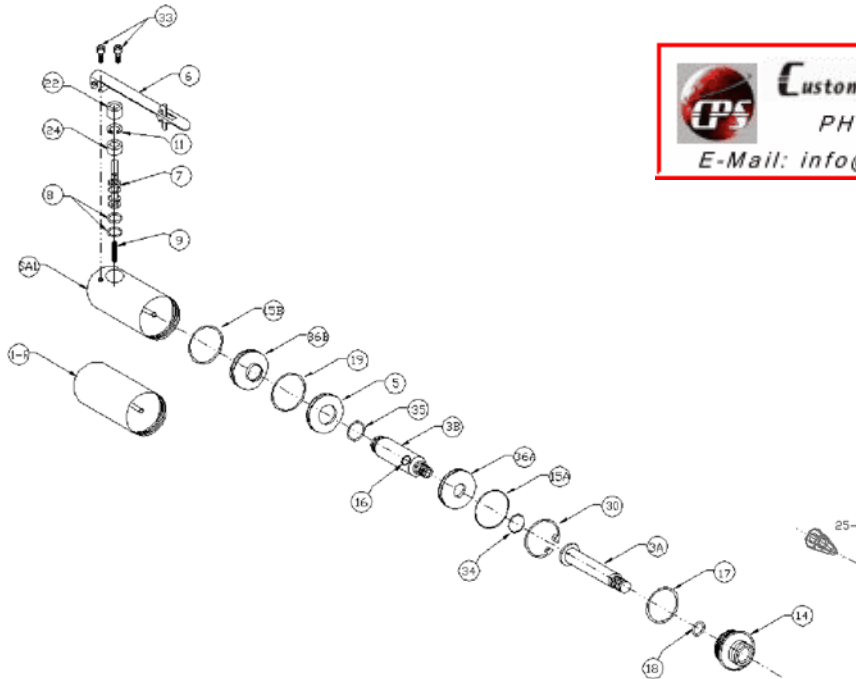


## PARTS BREAKDOWN



### SP-005 and SP-005 F BREAKDOWN

SA-1	PISTON HOUSING*	SA-1-005
1-F	PISTON HOUSING REMOTE	1-F-005
DRWG. NO.	DESCRIPTION	PART NO.
3A	FRONT PISTON SHAFT	3A-005
3B	REAR PISTON SHAFT	3B-005
5	CYLINDER DIVIDER	5-005
6	SAFETY LEVER ASSEMBLY	DA-1**
7	SPOOL	7-004**
8	SPOOL O'RING (2 required)	8-01-K10***
9	SPOOL SPRING	9-01**
11	SNAP RING	11-01**
14	END CAP	14-005
15A	FRONT PISTON SEAL	15A-005***
15B	REAR PISTON SEAL	15B-005***
16	O-RING (2 required)	16-003-K10***
17	O-RING	17-004-K10***
18	O-RING	18-005***
19	DIVIDER SEAL	17-004-K10
22	VALVE SPACER	22-004**
24	VALVE WASHER	24-01**
25-H	HEX CAM*****(Note)	25-H
29	PISTON WASHER	24-01
30	PISTON SNAP RING	30-005
33	SCREW (2 required)	28-01-K10**
34	PISTON SEAL	18-01***
35	O'RING	35-005-K10
36A	FRONT PISTON PLATE	36A-005
36B	REAR PISTON PLATE	36B-005

\*Sold with trigger assembly and air valve

\*\*Items not used in SP-005F

\*\*\*Only sold as part of o'ring repair kit—005-KIT

\*\*\*\*Hose supplied with unit 102-5, two hoses sent with SP-005F

\*\*\*\*\*Optional Cams available, for use with special tools—25-C-800, 25-F, 25-S, 25-R, 25-C

OPTIONAL 104 HANGER BRACKET AVAILABLE FOR WORKS STATION